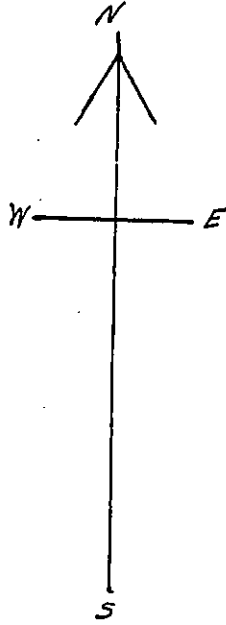
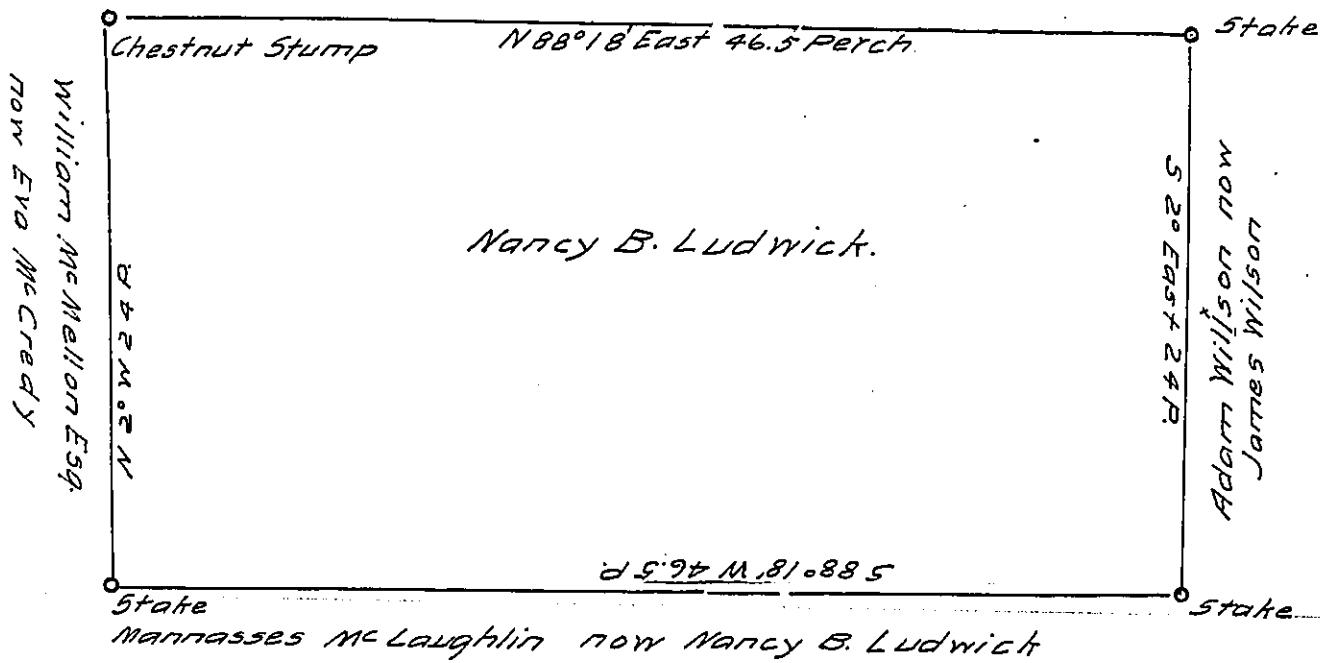


92



Josiah Scott now Porter Heirs



A Draft of a tract of land situated in the Township of Wilmington and County of Lawrence, containing six (6) acres, 9.2 perches and allowance of six per cent for roads, etc. Surveyed the 17 day of August 1914, in pursuance of a warrant granted to Nancy B. Ludwick dated the 22nd day of July 1914

John E. Forbes

County Surveyor.

To Hon. Henry Houch,  
Secretary of Internal Affairs.

IN TESTIMONY that the above is a copy of the original remaining on file in the Department of Internal Affairs of Pennsylvania, made conformably to an Act of Assembly approved the 16th day of February, 1833, I have hereunto set my Hand and caused the Seal of said Department to be affixed at Harrisburg, this third day of February 1916.

*Henry Houch*  
Secretary of Internal Affairs.